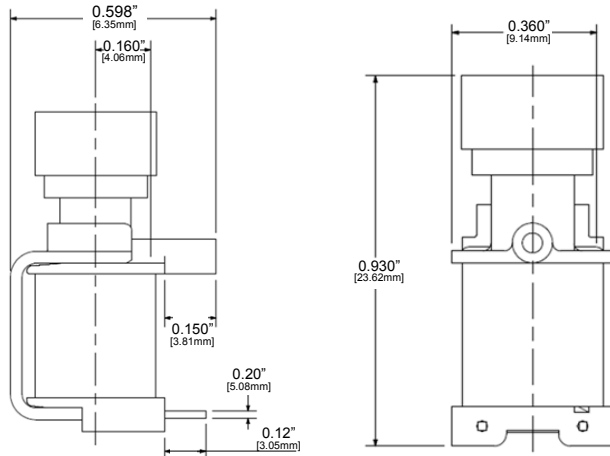
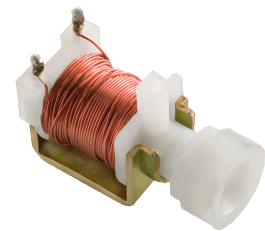
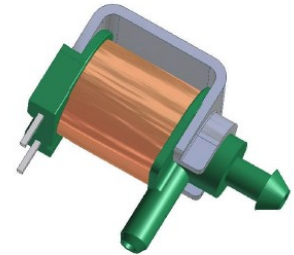




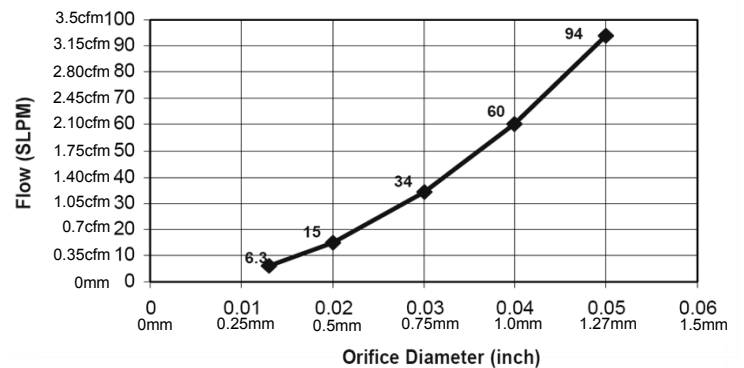
WE MAGNETISE THE WORLD

## CUSTOM SOLENOID VALVES Mini Two-Way Valve

Feature	Specification
Solenoid Valve Type:	<ul style="list-style-type: none"> <li>• 2-Way</li> <li>• Normally Closes up to 200 psi (13.8bar)</li> </ul>
Pressure:	<ul style="list-style-type: none"> <li>• Operating: 80-100 psi (5.5-6.9bar) (typical)</li> </ul>
Flow:	<ul style="list-style-type: none"> <li>• See Chart</li> </ul>
Leakage:	<ul style="list-style-type: none"> <li>• <math>&lt; 1 \times 10^{-5}</math> cc/sec</li> </ul>
Voltage:	<ul style="list-style-type: none"> <li>• Pull-In: 1.5 V (min)</li> </ul>
Coil Resistance:	<ul style="list-style-type: none"> <li>• Digital Pulse Driven Circuit</li> <li>• Coil Resistance per Customer Specification</li> </ul>
Response Time:	<ul style="list-style-type: none"> <li>• 3 millisecond</li> </ul>
Materials and Finish:	<ul style="list-style-type: none"> <li>• Glass filled Nylon</li> <li>• Seals per fluid Requirements</li> <li>• Zinc Plated Steel</li> </ul>
Cycle Life:	<ul style="list-style-type: none"> <li>• Valve Alone – Over 1 Million cycles</li> <li>• 2 AA Batteries – 120,000 cycles (typical)</li> </ul>



Orifice Diameter vs Flow @ 100 PSI (6.89 bar)



### CONTACT WORLDWIDE

#### USA

**Kendrion - Tri-Tech**  
56733 Magnetic Drive  
Mishawaka, IN 46545-7481  
USA

Phone: +1 574 257 2422  
Fax: +1 574 257 2421  
E-Mail: [info@tri-techllc.com](mailto:info@tri-techllc.com)

#### Europe

**Kendrion Magnettechnik GmbH**  
August-Fischbach-Straße 1  
78166 Donaueschingen  
Germany

Phone: +49 771 8009 3770  
Fax: +49 771 8009 3634  
E-Mail: [magnetic-systems@kendrion.com](mailto:magnetic-systems@kendrion.com)

[www.kendrion-tritech.com](http://www.kendrion-tritech.com)  
[www.kendrion-electromagnetic.com](http://www.kendrion-electromagnetic.com)